

Schedule “C” Municipal Class Environmental Assessment for the Lakeport Beach Development

Online Public Information Centre #1
March 31st, 2022



Indigenous Land Acknowledgement

We respectfully acknowledge that Northumberland County is located on the Mississauga Anishinaabek territory and is the traditional territory of the Mississauga.

In times of great change, we recognize more than ever the importance of honouring Indigenous history and culture and are committed to moving forward in the spirit of reconciliation, respect and good health with all First Nation, Métis and Inuit people.

As an organization and as individuals, we look forward to continuing to learn how can be better treaty partners.

Lakeport Beach Development Municipal Class Environmental Assessment

Due to the COVID-19 pandemic, this public meeting is being held virtually via Zoom

Presentation Etiquette:

- Be patient: virtual meetings don't always run as smoothly as planned.
- Be respectful: discriminatory, prejudicial or hateful comments and questions will not be tolerated, and you will be removed from the meeting.

The comment period for this meeting is from March 28 – April 14, 2022.

For ongoing updates, please visit the project website at <https://lakeportbeach.ca/environmental-assessment>. If you have any questions or wish to be added to the mailing list, please contact:

Jeremiah Pariag
Consultation and Engagement Lead
WSP Canada Inc.
jeremiah.pariag@wsp.com

Agenda

1. Lakeport Beach EA Study Purpose and Study Area
2. Problems and Opportunities
3. The Municipal Class Environmental Assessment Process and Study Timeline
4. Review of the Site
5. Overview of Environmental Studies
6. Next Steps

Study Purpose and Study Area



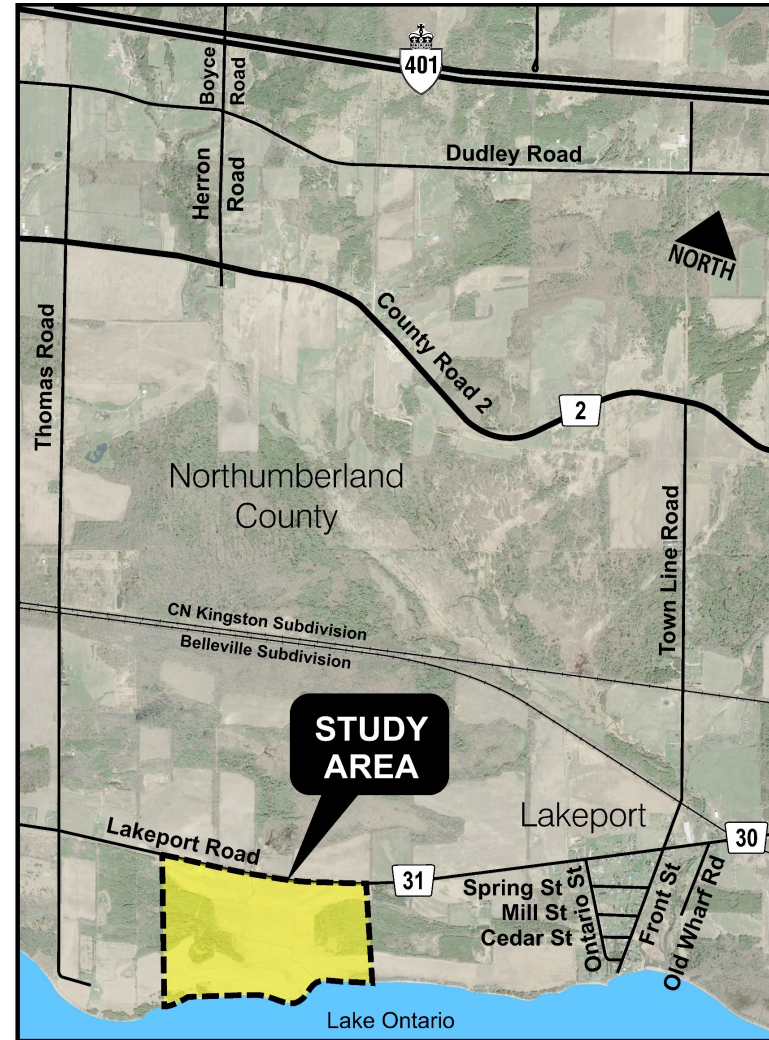
Study Purpose

Landlab has retained WSP Canada Inc to undertake a Schedule 'C' Municipal Class Environmental Assessment (MCEA) Study to accommodate the design of a complete residential waterfront community approximately 2km west of the village of Lakeport. This MCEA includes the following components:

1. Construction of a new sewage system and treatment plant;
2. Construction of a new water system and treatment plant;
3. Construction of a new stormwater retention/detention facility of infiltration system for the purpose of stormwater quality control; and
4. Construction of new roads or other linear paved facilities.

This project will be a key component in completing the proposed development, which consists of up to 800 residential units.

Lakeport Beach Development Municipal Class Environmental Assessment Study Area



Problems and Opportunities Statement



Problems and Opportunities Statement

Given the rural setting of the area, there is currently no servicing in the project study area to support the proposed Lakeport Beach Development. The proposed development will require municipal water servicing, sewage servicing, and stormwater quality control to successfully complete the community. An options analysis will be conducted to determine the preferred options for servicing the site.

The construction of new roads within the proposed development will also be required for the movement of people. These roads will service the community and provide a means of emergency access.

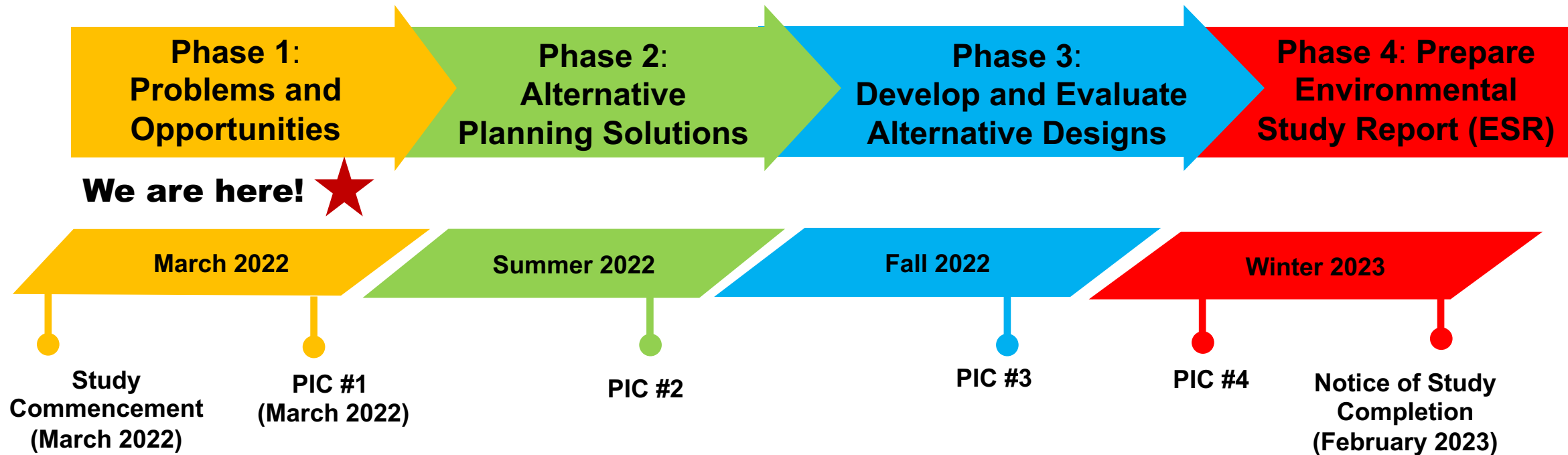
Municipal Class EA Process and Study Timeline



What is the Municipal Class Environmental Assessment (MCEA) Process?

The Lakeport Beach EA Study is being completed consistent with the MCEA process. Phases 1 to 4 of the process will be completed.

SCHEDULE



Project Site



Lakeport Beach Development Municipal Class Environmental Assessment



Overview of Environmental Studies



Studies Included in the EA

Several technical analyses and disciplines have been or will be completed as part of this EA Study and included in the analysis of the final recommendations:



Cultural Heritage



Water, Stormwater,
Wastewater and Drainage



Natural Environment



Geotechnical



Noise and Air Quality



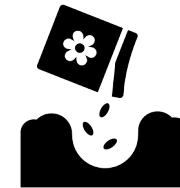
Traffic



Archaeology



Utilities and Municipal
Services



Soil and Contamination

Lakeport Beach Development Municipal Class Environmental Assessment

Q&A Session



The Q&A session will be moderated by WSP.



The Q&A session will be recorded for note-taking purposes only.



Questions will be referred to either the Project Team or Landlab to answer.



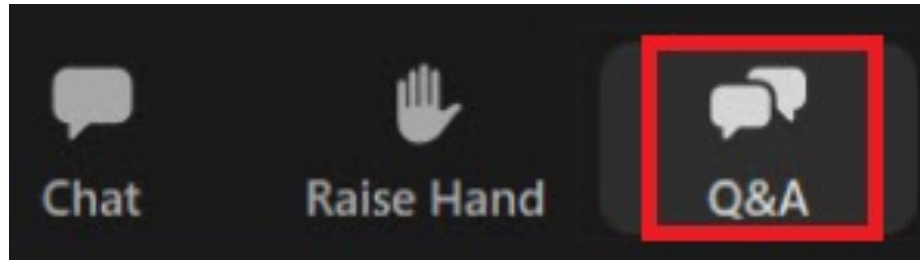
We are committed to responding to all questions. If there are an excess of questions during the allotted time for this meeting, we will respond to all remaining questions via one-on-one discussions, email, and/or in the PIC Summary Report.



If you would like to ask a question verbally, please use the “raise hand” function and a member of the Project Team will unmute you. If you would like to type your question, please click on the Q&A button.

Zoom Functionality

- Asking questions using the Q&A function:



- Using the “raise hand” function:



- Attendees who have dialed in by phone may **raise their hand by pressing *9** and **unmute by pressing *6**

If you require technical support, please use the Q&A function.

Question and Answer Session



What Are The Next Steps?

- 1** Summarize and process input received
(commenting period: March 28 – April 14, 2022)
- 2** Carry out fieldwork and background studies
- 3** Develop and evaluate alternative solutions
- 4** Prepare for PIC #2 in June/July 2022

Thank you for participating and contributing to the Lakeport Beach Development EA Study!

Have more comments? Please visit:
<https://lakeportbeach.ca/environmental-assessment>

Contact information:

Jeremiah Pariag
Consultation and Engagement Lead
WSP Canada Inc.
jeremiah.pariag@wsp.com